

John Kellogg

From: John Kellogg
Sent: Friday, September 25, 2020 5:18 PM
To: Bob Moore
Subject: RE: Burnt Fork Estates
Attachments: Sharp MX-3070V_20200710_114745.pdf

Hello Bob,

I was following up on this proposed pedestrian access from Burnt Fork Estates to the School soccer fields. We had deleted our plans for a road stub-out toward the School property and replaced it with a pedestrian path. **Has your Facilities Committee had a chance to review it?**

On a separate issue, I have prepared estimates of the number of students that Burnt Fork Estates will generate for Stevensville Schools. There is a wide range of possibilities in the estimates. As you know, Creekside Meadows has a large percentage of retired residents, so they currently only have three students attending Stevensville Schools. Even Twin Creeks has just seven students from their 53 residences. Using these numbers, if Burnt Fork Estates is developed over the next 10 years, it will only generate 21 to 28 students. On the other hand, if we use state averages on household size, then the subdivision could generate as many as 69 students.

I would welcome your response as to the capability of the Stevensville School District to accept somewhere between 21 and 69 additional students over the next ten years.

Thanks, John

John E. Kellogg 
Principal Planner
3115 Russell St / PO Box 1750
Missoula, MT 59806
(406) 728.1880 / (406) 728.0276 fax
johnk@pcimontana.com
www.pcimontana.com

From: Bob Moore <MooreB@stevensville.k12.mt.us>
Sent: Monday, July 13, 2020 4:09 PM
To: John Kellogg <johnk@pcimontana.com>
Subject: RE: Burnt Fork Estates

John,

I will pass this through the Facilities Committee of the Board and get back to you when I have their feedback.



Bob Moore
Superintendent

Stevensville Public Schools
406.777.5481

From: John Kellogg <johnk@pcimontana.com>
Sent: Friday, July 10, 2020 11:53 AM
To: Bob Moore <MooreB@stevensville.k12.mt.us>
Cc: Zane Johnson <zanej@pcimontana.com>
Subject: Burnt Fork Estates

Hello Bob,

We have been working on some minor revisions to the proposed subdivision and I wanted your take on our proposed School access. I remember you were not in favor of a Phillips Street connection, since it would run through a future school site. After meeting with the Town's department heads, it seems no one really wanted that connection. However, a pedestrian path to the school seems to make sense. So I'm sending you a layout that eliminates the road and puts a pedestrian path onto school property just south of your new soccer fields.

Let me know what you think of this, or if you have other recommendations.

Thanks, John

John E. Kellogg 
Principal Planner
3115 Russell St / PO Box 1750
Missoula, MT 59806
(406) 728.1880 / (406) 728.0276 fax
johnk@pcimontana.com
www.pcimontana.com

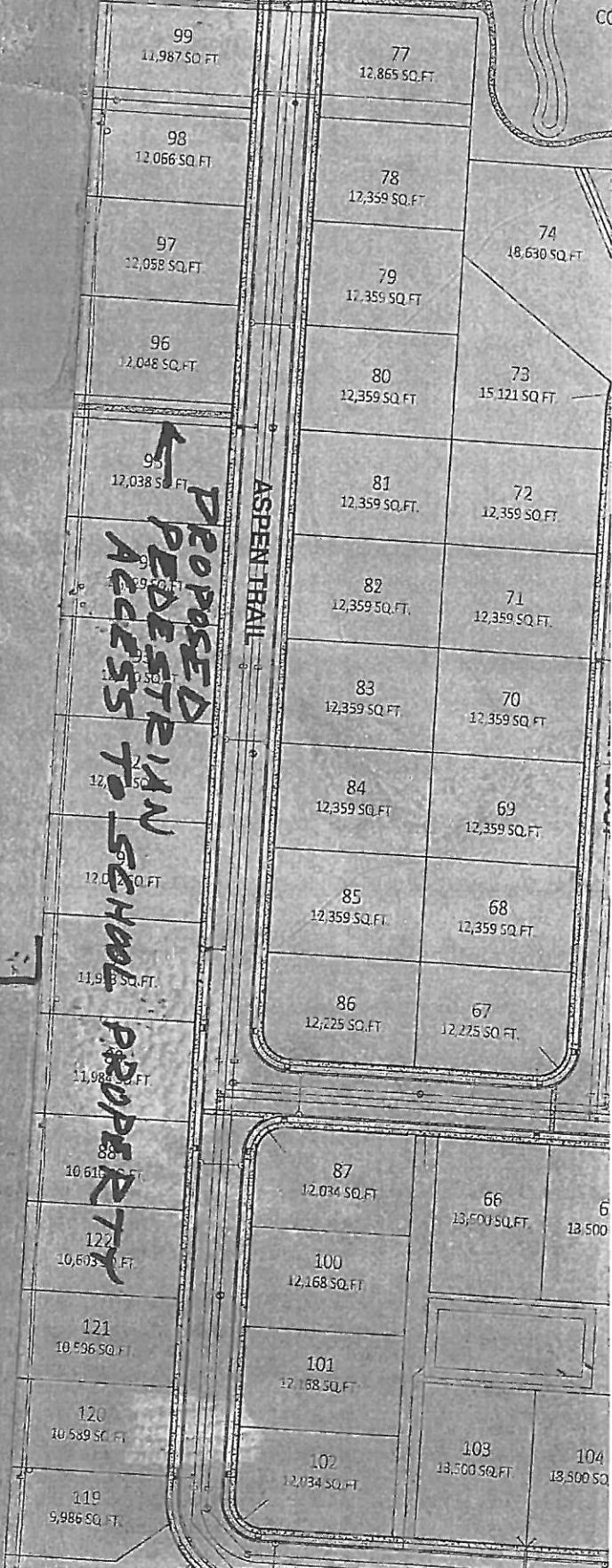
NEW
SOCCER
FIELDS

School
Property

PROPOSED
PEDESTRIAN
ACCESS TO
SCHOOL
PROPERTY

ASPEN TRAIL

CREEK SIDE





Dr. Robert Moore
Superintendent
Ext 136

Stevensville Public Schools

300 Park Avenue
Stevensville, MT 59870
Phone: 406-777-5481
Fax: 406-258-1246



Bill Schiele
Clerk/Business Manager
Ext 139

September 28, 2020

John Kellogg
3115 Russell St/ PO Box 1750
Missoula, MT 59806

Mr. Kellogg,

I have received your email request dated September 25, 2020. I will do my best to answer questions and provide clarity regarding how the proposed Burnt Fork Estates may impact the Stevensville School District.

1. The Stevensville Schools are able to accommodate enrollment growth assuming a standard distribution of students. Standard distribution is impossible to predict, but housing that is more economical for young families often creates higher loads in lower grades. This creates issues when trying to accommodate "bubble" classes with high enrollment. The economic impact to the district could create the need for new teachers at an average total cost of about \$50,000 per teacher. Unfortunately, the Montana school funding model does not allow schools to acquire funding for new positions in advance. Funding is based on prior year enrollment, which can create a budget shortfall when we see a sudden increase in students.
2. The District has no intention of building, maintaining and supervising a trail from the location on your map to the school. This is problematic as students would be required to detour around the 8.5 acres of private property located in the middle of school property, circumvent the track, and then cross the ditch at the termination of Phillips Street before arriving at any area supervised by adults. In addition, the Board of Trustees approved request from the Stevensville Youth Baseball Association for additional field development in the area located east of ALC and south of the present youth baseball and youth soccer fields.
3. We are very concerned about drainage in the area that would affect development of our property. At present, we believe drainage will significantly impact our property for future school site development.

Please feel free to contact me with questions.

Sincerely,

Robert Moore Ed. D.
Superintendent
Stevensville Public Schools