

**PROJECT  
LOCATION**



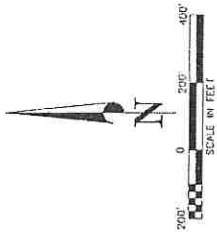
VICINITY  
MAP

BURNT FORK ESTATES  
RAVALLI COUNTY  
S26 T09N R20W

CS 495033-7R  
2 of 5

# CERTIFICATE OF SURVEY

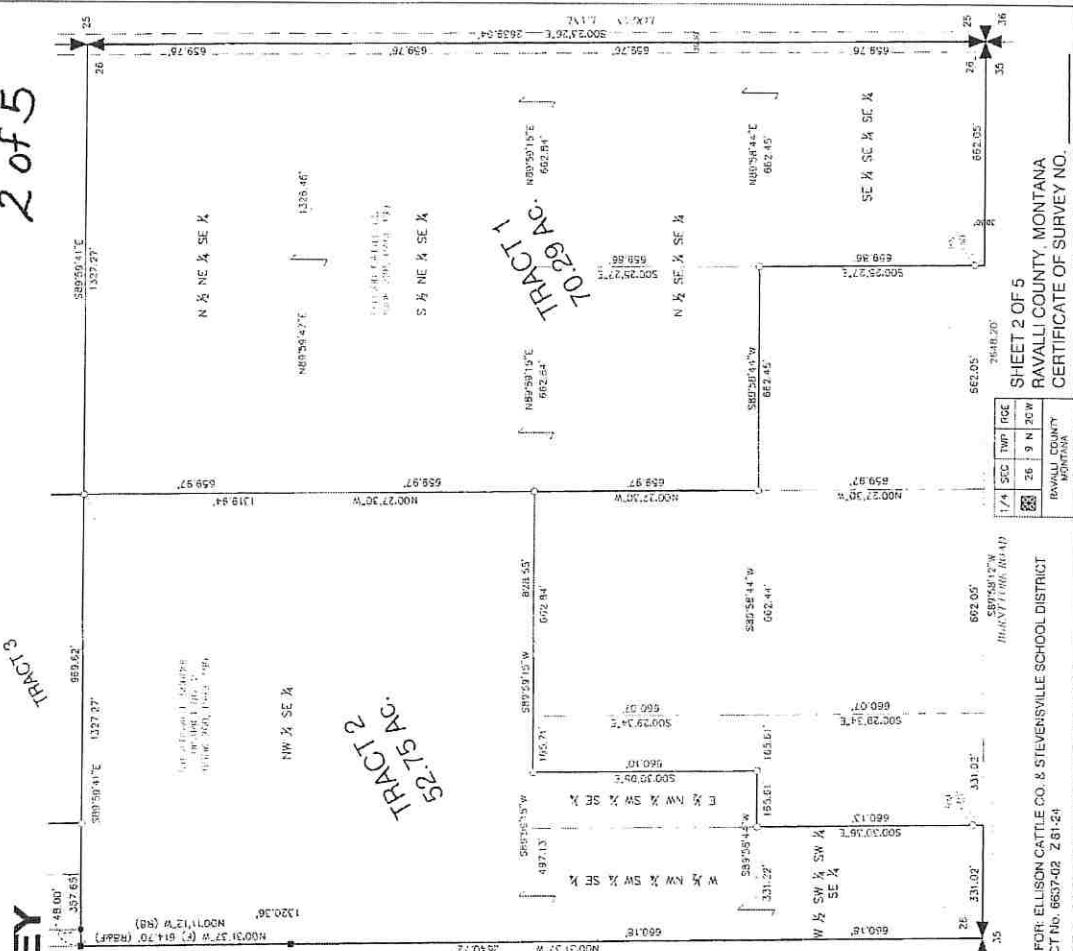
RETRACEMENT SURVEY  
IN SECTION 26, TWP. 9 N., RANGE 20 W., PMM  
RAVALLI COUNTY, MONTANA



- LEGEND**
- ① SET MARK: BEAR WITH 1/4" ALUM CAP (LORSON, RIPPERS)
  - FOUND: 1/4" ALUM CAP JAWZ (SCHENKEL)
  - FOUND: YELLOW PLASTIC CAP (DAV-REDBOOK)
  - FOUND: 1/4" ALUM CAP (LORSON, RIPPERS)
  - FOUND: 1/4" ALUM CAP (LORSON, RIPPERS)
  - FOUND: 1/4" ALUM CAP (LORSON, RIPPERS)
  - FOUND: 1/4" ALUM CAP (LORSON, RIPPERS)
  - FOUND: 1/4" ALUM CAP (LORSON, RIPPERS)
  - FOUND: 1/4" ALUM CAP (LORSON, RIPPERS)
  - FOUND: 1/4" ALUM CAP (LORSON, RIPPERS)
  - FOUND: 1/4" ALUM CAP (LORSON, RIPPERS)
  - FOUND: 1/4" ALUM CAP (LORSON, RIPPERS)
  - FOUND: 1/4" ALUM CAP (LORSON, RIPPERS)
  - FOUND: 1/4" ALUM CAP (LORSON, RIPPERS)
  - FOUND: 1/4" ALUM CAP (LORSON, RIPPERS)
  - FOUND: 1/4" ALUM CAP (LORSON, RIPPERS)
  - FOUND: 1/4" ALUM CAP (LORSON, RIPPERS)
  - FOUND: 1/4" ALUM CAP (LORSON, RIPPERS)
  - FOUND: 1/4" ALUM CAP (LORSON, RIPPERS)
  - FOUND: 1/4" ALUM CAP (LORSON, RIPPERS)
  - FOUND: 1/4" ALUM CAP (LORSON, RIPPERS)
  - FOUND: 1/4" ALUM CAP (LORSON, RIPPERS)
  - FOUND: 1/4" ALUM CAP (LORSON, RIPPERS)
  - FOUND: 1/4" ALUM CAP (LORSON, RIPPERS)
  - FOUND: 1/4" ALUM CAP (LORSON, RIPPERS)
  - FOUND: 1/4" ALUM CAP (LORSON, RIPPERS)
  - FOUND: 1/4" ALUM CAP (LORSON, RIPPERS)
  - FOUND: 1/4" ALUM CAP (LORSON, RIPPERS)
  - FOUND: 1/4" ALUM CAP (LORSON, RIPPERS)
  - FOUND: 1/4" ALUM CAP (LORSON, RIPPERS)
  - FOUND: 1/4" ALUM CAP (LORSON, RIPPERS)
  - FOUND: 1/4" ALUM CAP (LORSON, RIPPERS)
  - FOUND: 1/4" ALUM CAP (LORSON, RIPPERS)
  - FOUND: 1/4" ALUM CAP (LORSON, RIPPERS)
  - FOUND: 1/4" ALUM CAP (LORSON, RIPPERS)
  - FOUND: 1/4" ALUM CAP (LORSON, RIPPERS)
  - FOUND: 1/4" ALUM CAP (LORSON, RIPPERS)
  - FOUND: 1/4" ALUM CAP (LORSON, RIPPERS)
  - FOUND: 1/4" ALUM CAP (LORSON, RIPPERS)
  - FOUND: 1/4" ALUM CAP (LORSON, RIPPERS)
  - FOUND: 1/4" ALUM CAP (LORSON, RIPPERS)
  - FOUND: 1/4" ALUM CAP (LORSON, RIPPERS)
  - FOUND: 1/4" ALUM CAP (LORSON, RIPPERS)
  - FOUND: 1/4" ALUM CAP (LORSON, RIPPERS)
  - FOUND: 1/4" ALUM CAP (LORSON, RIPPERS)
2.75 AC.

PARCEL A  
COS 4825A

PARCEL B  
COS 4825A



**PROFESSIONAL**  
**ENGINEERING**  
**INCORPORATED**  
ENGINEERING PLANNING SURVEYING  
1115 W. 10TH ST. SUITE 100  
MONTANA 59404-1000

PREPARED FOR: ELLISON CATTLE CO. & STEVENSVILLE SCHOOL DISTRICT  
PCI PROJECT NO. 8657482 281-24

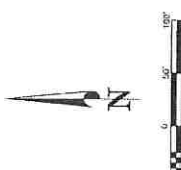
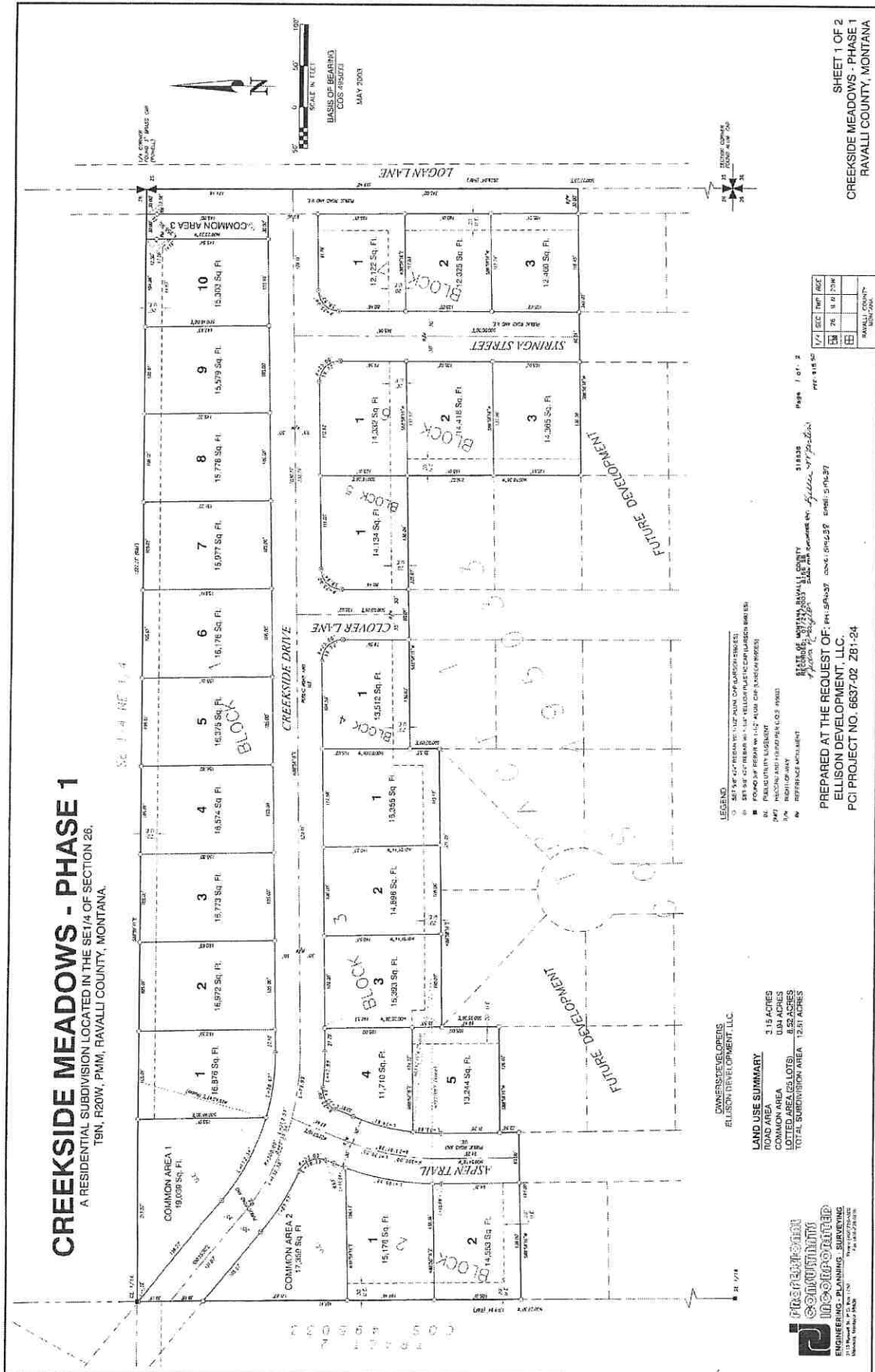
SHEET 2 OF 5  
RAVALLI COUNTY, MONTANA  
CERTIFICATE OF SURVEY NO. \_\_\_\_\_

STATE OF MONTANA, RAVALLI COUNTY  
RECORDED: 01/20/2003 8:39 CERT/ARVY  
Ravalli County Clerk and Recorder by: *Alicia MacEachern* 495033-7R  
FEE: \$11.50

# CREEKSIDE MEADOWS - PHASE 1

A RESIDENTIAL SUBDIVISION LOCATED IN THE SE1/4 OF SECTION 26,  
T8N, R20W, P1M1, RAVALLI COUNTY, MONTANA.

SCALE 1" = 40' N.E. 1/4



**OWNERS/DEVELOPERS**  
ELLISON DEVELOPMENT, LLC

**LAND USE SUMMARY**  
ROAD AREA 3.15 ACRES  
COMMON AREA 0.94 ACRES  
LOTTED AREA (26 LOTS) 8.52 ACRES  
TOTAL SUBDIVISION AREA 12.61 ACRES

**LEGEND**  
1. LOT  
2. COMMON AREA  
3. FUTURE DEVELOPMENT  
4. PUBLICATION EASEMENT  
5. MECHANIC AND TRADE PERS. LOT EASEMENT  
6. RIGHT OF WAY  
7. EASEMENT

PREPARED AT THE REQUEST OF: PHILIPSON CONSULTANTS, INC.  
ELLISON DEVELOPMENT, LLC.  
PCI PROJECT NO. 6637-02 Z81-24



SHEET 1 OF 2  
CREEKSIDE MEADOWS - PHASE 1  
RAVALLI COUNTY, MONTANA