



# STEVENSVILLE FIRE DEPARTMENT

*Chief Jeffrey A. Motley*

206 Buck St. • P.O. Box 193 Stevensville, MT 59870 • 406-777-5271 office • 406-777-4284 fax

Dear Community Partner,

The Stevensville Fire Department will begin conducting routine safety surveys in buildings throughout the Town each year. These surveys help reduce fires by eliminating basic fire hazards, educating members of the community on potential hazards, and helping to ensure a safe and livable community.

Enclosed you will find a self-survey checklist to assist you in assessing general safety and code compliance within your building. Please take a few moments to conduct the survey and begin removing hazards as needed. You may find it useful to conduct monthly, quarterly, or even bi-annual safety surveys based on your facility needs. This survey is provided as a voluntary compliance tool to assist you in maintaining a fire safe facility. We ask that you make a copy of the completed survey and return it to us so that we can better assess the fire prevention and education needs in our community. It is critical that firefighters understand the layout of your facility. You can help by drawing a floorplan on the provided sheet, too.

We encourage all facilities to implement emergency and safety programs to improve employee and customer safety as well as business recovery. We recommend a safety plan that would incorporate the following:

- **Emergency plan:** A specific response plan that will offer guidance to employees on how to respond to emergencies such as building evacuation, fire procedures, response to alarms, severe weather, bomb threats, etc. These plans are required for some buildings but recommended for everyone.
- **Disaster recovery plan:** The recovery plan provides guidance on how to recover after an incident such as a fire or natural disaster and may include alternate worksites, backup storage process and location for critical data, and assembling employees after an incident.
- **Training:** Continual review, training, & updates for employees are a critical component to each plan.

Numerous internet resources are available to assist you in planning and preparations such as:

- NFPA (National Fire Protection Association) publishes "NFPA 1600: Standard for Disaster/Emergency Management and Business Continuity Programs". [www.NFPA.org](http://www.NFPA.org).
- OSHA emergency plan system: [www.osha.gov/SLTC/etools/evacuation/expertsystem/default.htm](http://www.osha.gov/SLTC/etools/evacuation/expertsystem/default.htm)
- FEMA emergency planning tips: [www.fema.gov/business/index.shtm](http://www.fema.gov/business/index.shtm)

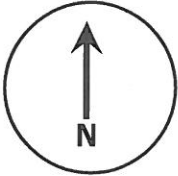
The Stevensville Fire Department is ready to assist you with preventing and responding to emergencies associated with your business. Feel free to contact us at 406-777-5271 or via e-mail at [fire@townofstevensville.com](mailto:fire@townofstevensville.com) with any additional questions or comments.

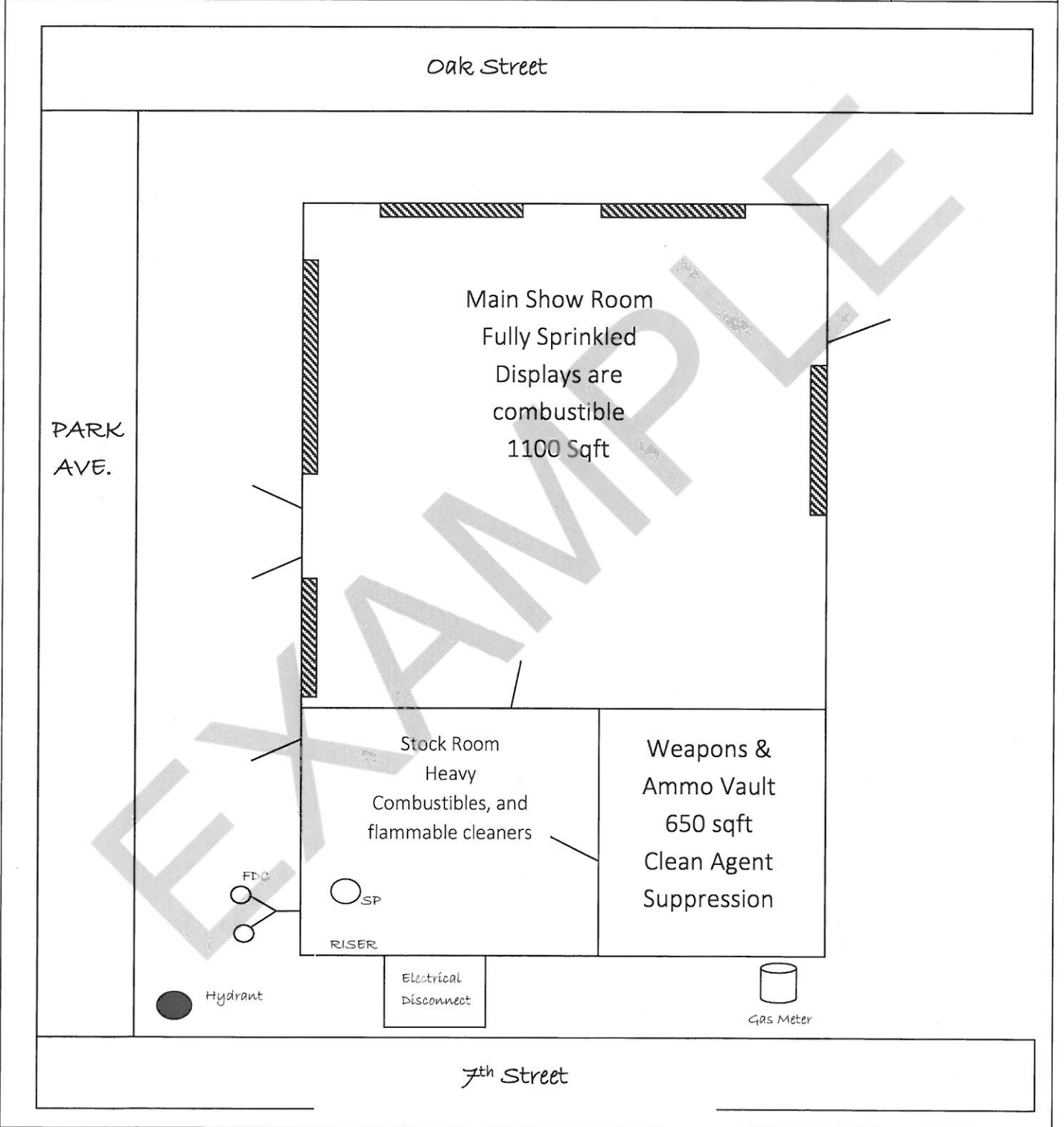
Sincerely,

Jeff Motley  
Fire Chief

Stevensville Fire Department

*Committed to Community, Dedicated to Progress*

Direction 	Address: 147 South 7 <sup>th</sup> Street	PRE-PLAN #
	Name of Occupancy: Frank's Shooting Sports	



NOT TO SCALE  
PRE-INCIDENT PLAN DIAGRAM

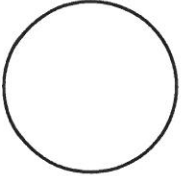
Stevensville Fire Department

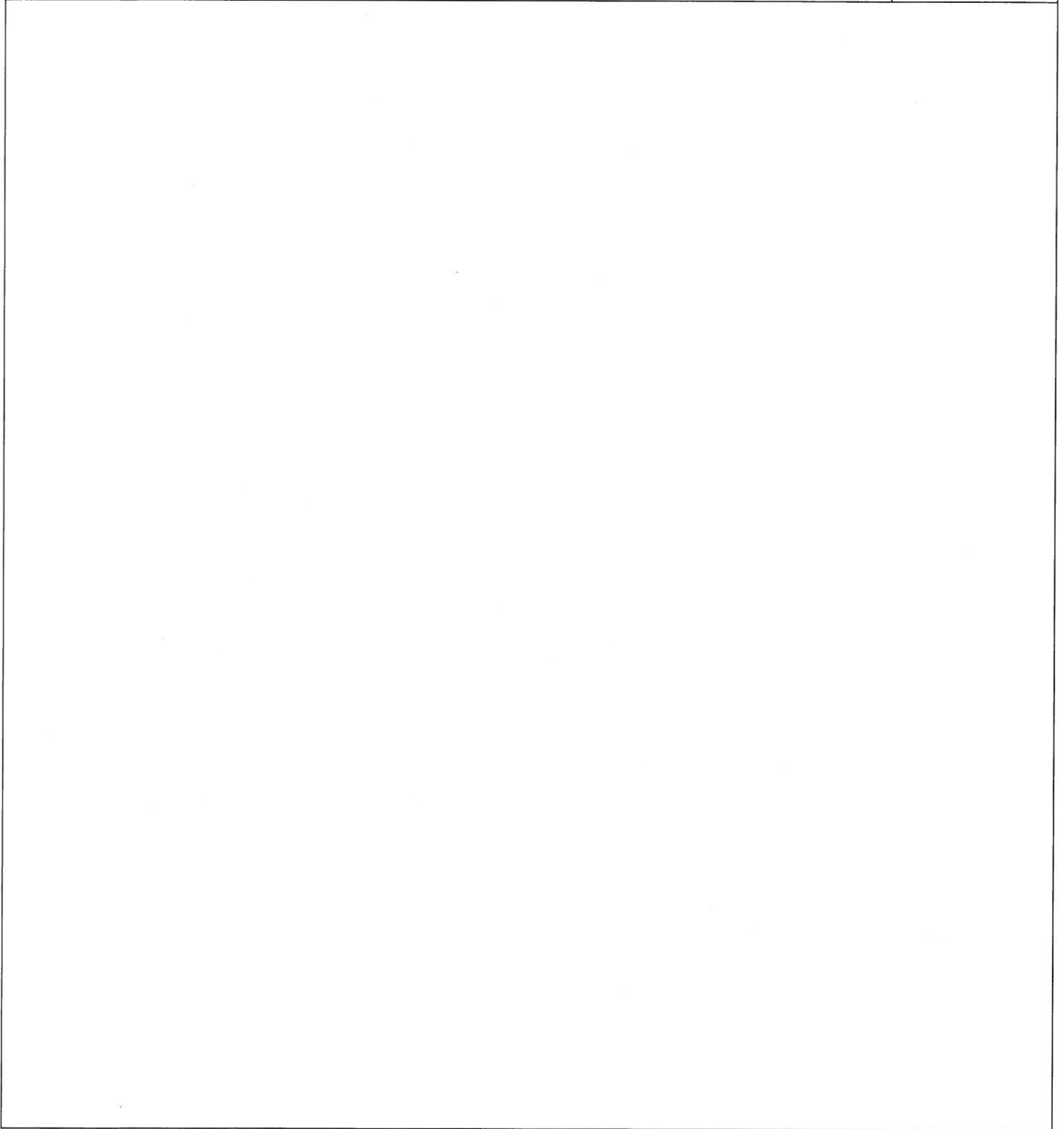
<p><i>Commercial Fire Safety Self-Survey</i></p>	Address: _____ Business Name: _____ Employee completing survey: _____ Date: _____
--	---

The Stevensville Fire Department provides this document as a courtesy to assist you with identifying routine fire safety issues within commercial facilities. These surveys improve safety by eliminating basic fire hazards, educating employees on potential hazards, and help to ensure a safe and livable community. This form is intended to assist you with general compliance items in your building - the list may not be all inclusive as requirements change based on occupancy type, use, and size. The list below is intended to act as a guide to help you begin promoting fire safety within your facility.

<b>A. MEANS OF EGRESS</b>	N/A	YES	NO
1 Exit doors are easily accessible and unobstructed. The door opens easily and to the full open position.			
2 Exit doors unlatch with a single operation so that anyone in the building can exit without delay.			
3 Fire doors are maintained in the closed position or are self closing. Fire doors are unobstructed and will fully close.			
4 Exit walkways are clear of stock, storage, or items that restrict exit width. A walkway at least 44" wide is provided.			
5 Stairwells (stairs, landing, areas under landing) are clear of storage. Continuous lighting provided in stairwell.			
6 The emergency exit path is marked by exit signs so it is easily identifiable to employees and the public.			
7 Exit signs and emergency lights are unobstructed and operable under normal and emergency power.			
<b>B. FIRE PROTECTION</b>			
1 Fire extinguishers: Size 2A:10B:C min., service tag or new tag within 1 year, mounted to wall <5' high, accessible			
2 Fire sprinkler and/or standpipes have been serviced by a licensed fire protection contractor within the last year.			
3 Fire sprinkler valves are clearly labeled (indicating the area served) and locked open or monitored by the fire alarm.			
4 The fire department connection feeding the fire sprinkler or standpipe is easily accessible and labeled.			
5 Stock, storage, displays, etc is 18" below fire sprinklers, 2' below ceiling in non-sprinkled areas, no higher than 12'.			
6 Standpipe connections are accessible, protective caps are in place and are only hand-tight.			
7 Kitchen hood, paint booth, or specialize extinguishing systems have been serviced within the last 6 months.			
8 Kitchen hood, paint booth, or other hood exhaust systems are maintained clean and are operating (running).			
9 Fire alarm system has been serviced by a licensed fire alarm contractor within the last year.			
10 Fire alarm devices such as pull stations, audio or visual alarms, or other devices are unobstructed and visible.			
<b>C. HEATING SYSTEM</b>			
1 Fuel burning appliances that are vented to the outside have the vent in place which is free of breaks or holes.			
2 Appliance and/or equipment covers are in place and secured to the appliance or equipment. .			
3 Spacing of not less than 36" is maintained between combustibles (anything that will burn) and heating systems.			
<b>D. ELECTRICAL</b>			
1 Extension cords are only used on a temporary basis, only for portable items, never in place of permanent wiring.			
2 Breaker box does not have any open slots or circuits, circuits are clearly labeled, breaker cover(s) remain closed.			
3 All electrical junction box covers, outlet covers, and switch plates are secured in place.			
4 Clearance is maintained around the electrical panel at all times (minimum: 30"wide x 36"deep x 78"high)			
<b>E. GENERAL</b>			
1 Storage, stock, supplies, etc. are maintained in an orderly manner and not excessive to present a fire or safety hazard.			
2 Flammable liquid is stored in approved metal safety cans and limited to 10 gallons unless otherwise approved.			
3 A MSDS (Material Safety Data Sheet) is on site for all chemicals, the documents are posted and easily accessible.			
4 The property street address & suite identification are posted in not less than 4" tall numbers and/or letters.			
5 If the property has a knox box for fire department entry: has the fire department been notified of any key changes?			
6 Fire Safety & Fire Evacuation plans prepared for review for all Assembly, Educational, and Institutional facilities			
<b>F. REPORTS</b>			
Inspection reports for the following systems must be maintained on site and available for review: Fire Sprinkler Systems, Standpipe Systems, Fire Pumps, Fire Alarms, Hood Suppression, Other Suppression, and Emergency Power Systems.			
<b>OTHER</b>			
< The facility Business License Certificate of Occupancy and the current business license are posted within public view near the primary designated entry. Typically, these documents should be posted within 15' of the primary entry and easily visible.			
< Secondary exit doors are labeled from the exterior with the business name and/or suite identifier. This greatly improves fire department access into the facility, especially in strip mall situations with multiple doors.			
< Employees have been trained on the facility emergency plan and training has been documented.			
< Managers should routinely survey all exit routes to ensure the exits and exit routes are unobstructed, the walking path does not present any hazards such as trip or fall hazards, and any needed stairs, guardrails, or handrails are in good repair.			

**PLEASE NOTE WHERE ELECTRICAL EQUIPMENT AND GAS APPLIANCES ARE LOCATED IN YOUR FACILITY ON THE PROVIDED MAP. (Reverse)**

Direction 	Address:	PRE-PLAN #
	Name of Occupancy:	



NOT TO SCALE